



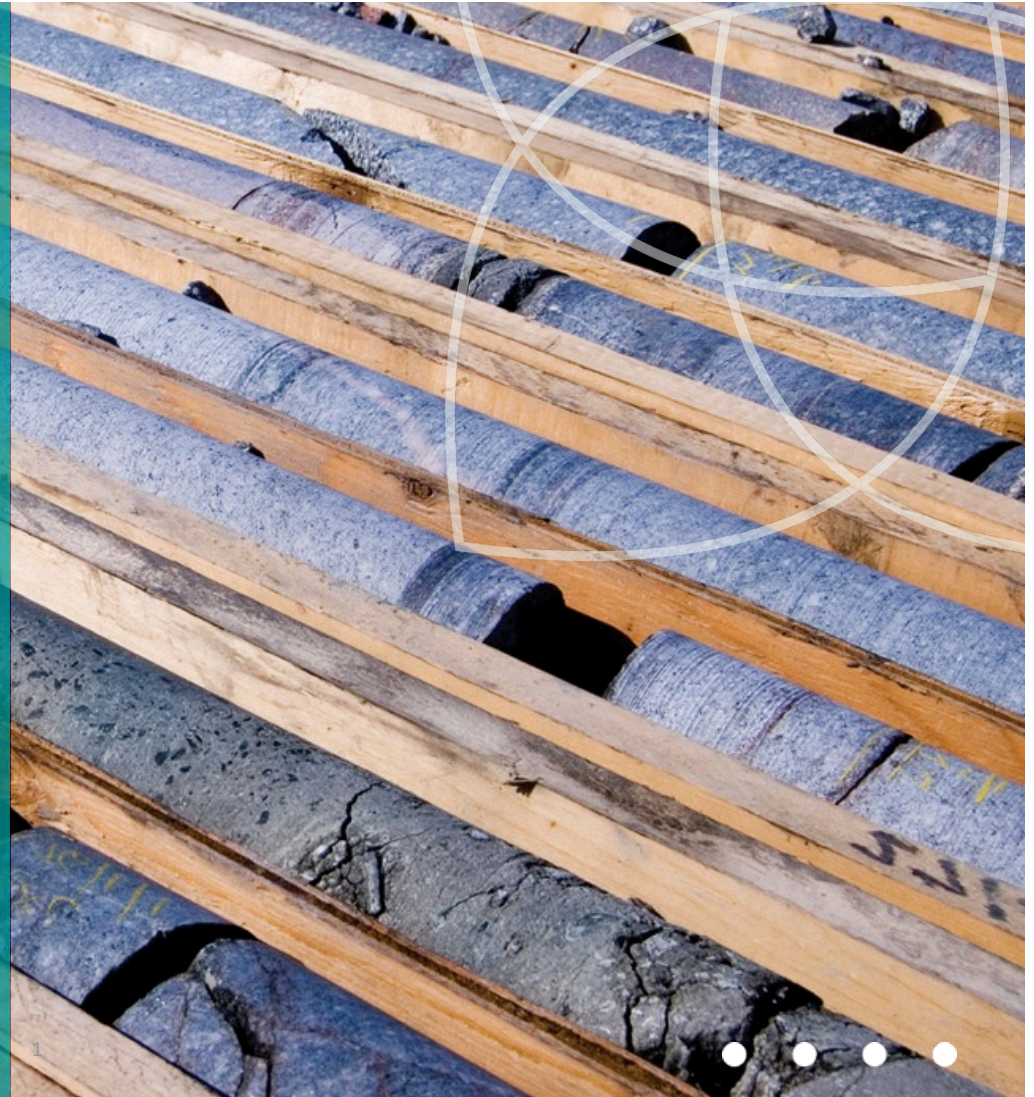
CSA Global
Mining Industry Consultants
an ERM Group company

Atex-Alliance Auger and Soil Sample Results – infill update Slide 13-14

BY: Michael Cronwright

31 March 2022

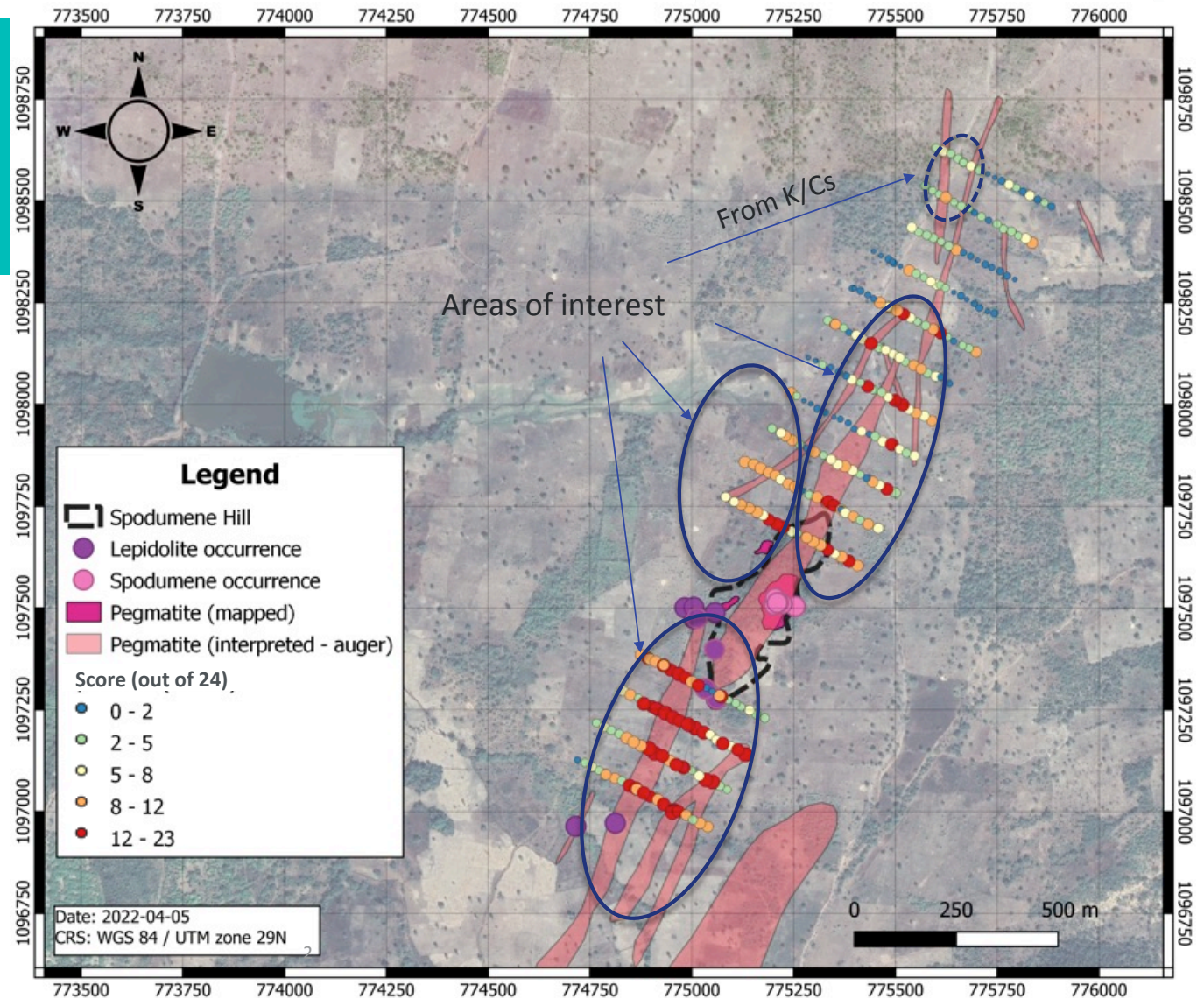
Updated 29 June 2022



Scored Results

Score based on following criteria:

- Element used: Cs, Li, Nb, Rb, Sn Ta
- Each scored on percentile class:
 - 0-25th = 0
 - 25-50th = 1
 - 50-75th = 2
 - 75-95th = 3
 - >95th = 4
- Score = points allocated to each element are added



Infill Scored Results

Score based on following criteria:

- Element used: Cs, Li, Nb, Rb, Sn Ta
- Each scored on percentile class:
 - 0-25th = 0
 - 25-50th = 1
 - 50-75th = 2
 - 75-95th = 3
 - >95th = 4
- Score = points allocated to each element are added

